



Shown in Deep Red

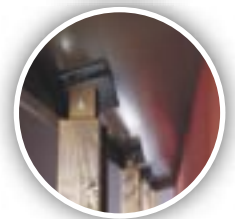
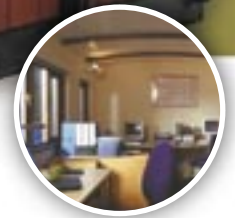
## The Henley **Midispace**

With an interior of 12 square metres, the Henley Midispace is highly versatile, functioning superbly as an office, a multi-purpose garden room or both.

In office configuration, the Midispace can house three workspaces in real comfort and when used for single or twin occupancy, it offers plentiful space for storage and visitors alike.

The Midispace shares many of the same design principles common to Henley's best-selling Compact range. This includes a modular base manufactured from heavy-duty tanalised timber and walls constructed using our unique 'sandwich' panel system. These walls are 84mm thick, with exterior surfaces made from 18mm waterproofed and bonded plywood, while internal walls benefit from 18mm MDF, emulsion-finished in the customer's choice of colour. A 50mm polystyrene inner is deployed in the floor and walls, combining with flexible insulation in the roof to deliver excellent insulation qualities. This helps to guarantee comfortable home-working, not only in cold conditions, but in hot weather, when keeping cool is a vital imperative. The insulation performance also applies to sound levels, both in terms of keeping sound in and out. As a consequence, the Midispace is inherently capable of performing admirably as a home studio.

Manufactured from 1.2m sections of GRP (fibre glass), with an attractive slate effect finish, the roof of the Midispace is similar to that of the largest building in the Henley range - The Varispace. As well as offering excellent insulation, the roof is designed to be maintenance free for over 20 years and is the same material used in boats and buildings over 40 years old - it is thus fully capable of withstanding extreme weather conditions.



Henley Offices  
28 Queens Rd  
Hethersett, Norwich  
NR9 3DB

**Tel.** 0870 240 7490

**Fax.** 0845 130 3175

[www.henleyoffices.com](http://www.henleyoffices.com)

**email:** [customerservices@henleyoffices.com](mailto:customerservices@henleyoffices.com)

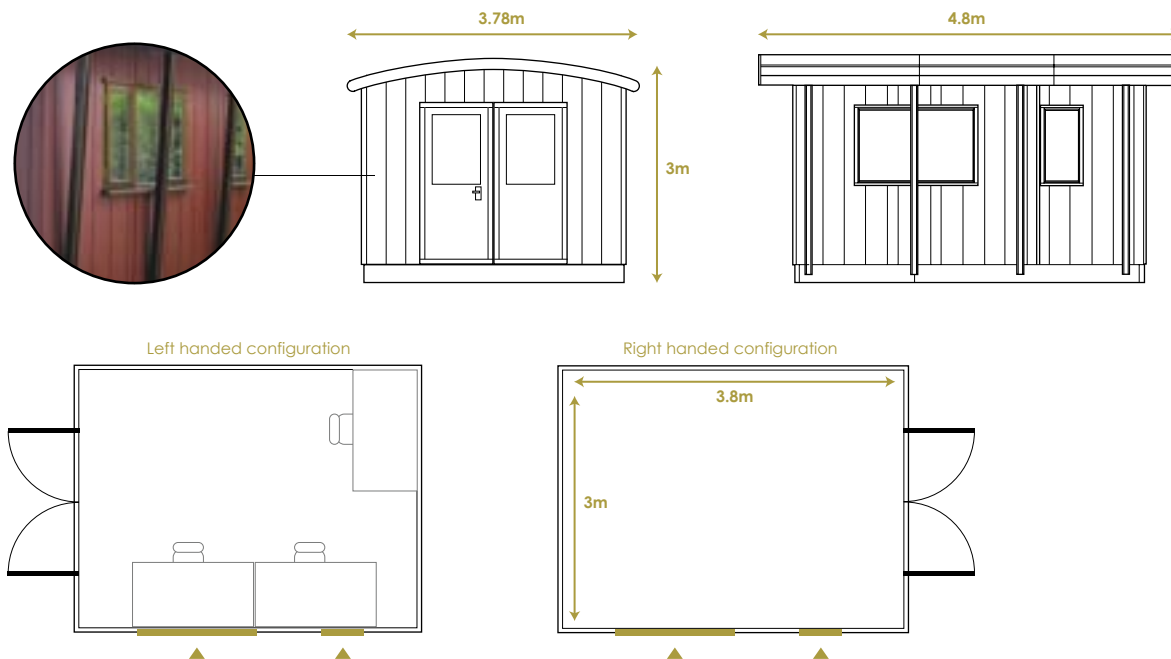


# The Henley **Midspace**

## Configuration options

### Windows

The Henley Midspace can be configured with windows on either side of the office at no extra cost.



### Building dimensions

- Interior: Length 3.8m Width 3m Height 2.4m
- Exterior: Length 4.8m Width 3.78m Height 3m (including overhang)

### Seating & Storage

We can supply a choice of office furniture, approved for use with the Henley range. Please see our separate brochure or our website for further details.

### Doors

- Sealed unit conforms to BS6206
- Reinforced base panel
- Five-lever mortice lock (BS3621)

### Windows

- Household-quality conforming to BS644 (pt. 1) & BS942
- 24 mm double-glazed sealed units
- Key-operated window locks
- All window handles have a lockable 'night-vent' facility
- Trickle vents to all windows

### Weatheresting

- BS6375 part 1

### Joinery finish

- Sikken Cetol Filter 7
- Exterior extra-durability wood stain system
- BS EN 927-1 1977

### Characteristics

- Extra high protection for timber exposed to maximum weathering
- A unique combination of resins which maintains the coating's film integrity
- Permanently fixed ultraviolet absorbers to protect the timber from degradation by sunlight
- Uniform pigment dispersion ensures an exceptionally translucent wood stain film
- Walls and floor fully insulated with 50mm solid polystyrene
- Walls and ceilings lined with 15mm medium density fibre-board
- Interior walls finished in vinyl silk emulsion ready-to-use
- Exterior clad in heavy-duty 18mm construction grade panels

### Structural timber treatment

- Tanalised pressure-tested timbers

### Roofing

Made from 1.2m sections of fully-insulated GRP fibre-glass with slated effect finish.

### Electrics

- 6 x double sockets
- Consumer unit supplied for mains power connection
- 4 x double spot lamps (60 watts) supplied
- Fully pre-wired to BS7671: 2002 Amendment

